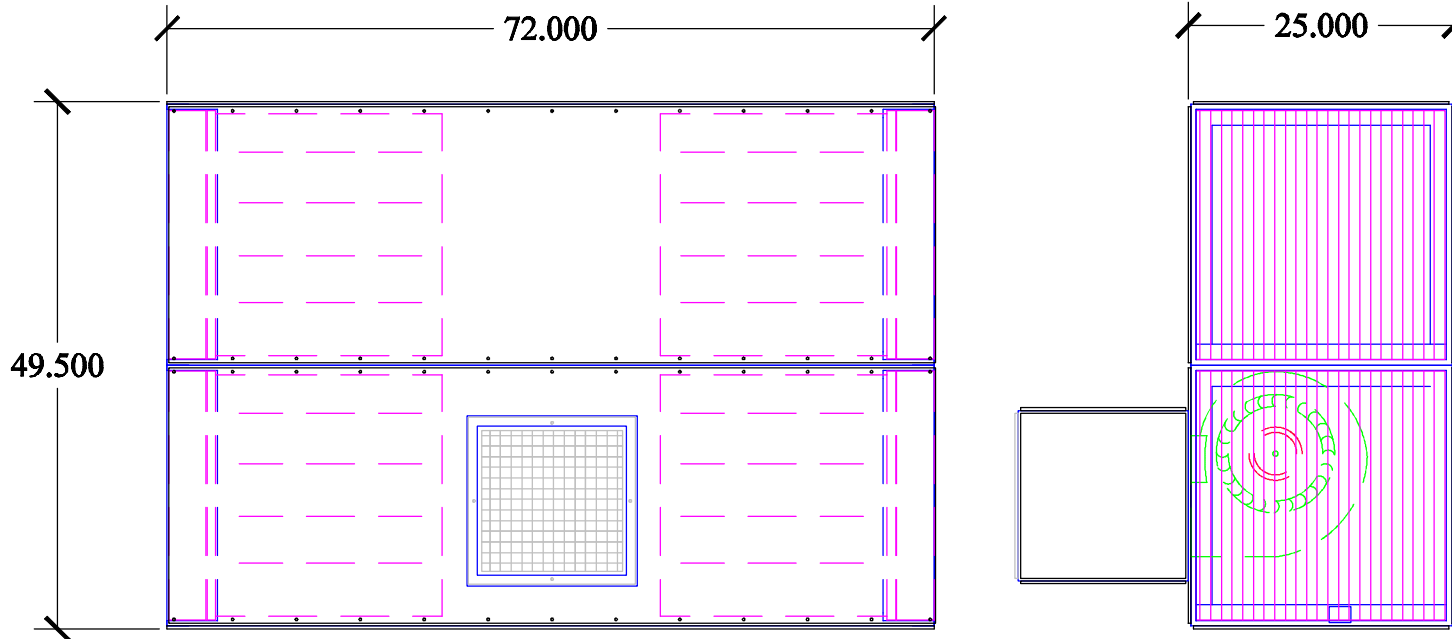
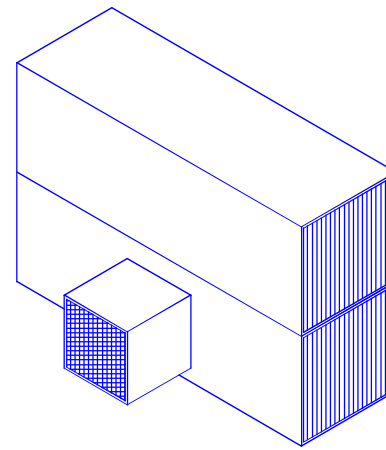


*optional silencer shown



SHEET TITLE : **AZTech T3545x2V**
 DRWG. NO.: **T32V-060208** DRAWN BY: **TAA**
 DATE: **06/02/08** SCALE: **NTS**

SPECIFICATIONS:

- DIMENSIONS:** 49.5"H X 72" W X 25" D
- MOTOR:** 3/4 HP, 115/230/1/60, 2 SP., 9.2 FLA
 2 HP, 208-230/1/60, 10.8-10.0 FLA
 2HP, 208-230/460/3/60, 6.0-5.8/2.9 FLA
 3HP, 230/460/3/60, 8.6/4.3 FLA
- CFM:** 3/4 HP - 3,000 CFM @ .6" W.G.
 2 HP - 3,500 CFM @ 1.0" W.G.
 3HP - 4,500 CFM @ .85" W.G.
- CONSTRUCTION:** 12 & 14 GA POWDER COATED STEEL FRAME.
 3/16 POLYETHYLENE PANELS. FULL CARBON STEEL CONSTRUCTION AVAILABLE.
 4-WAY ALUMINUM EXHAUST GRILLE
- ELECTRICAL:** 3/4 HP-15 FT CORD & 2 SP. SWITCH
 2 HP, 1 PH. - WIRED TO JCT. BOX
 2 & 3 HP, 3 PH. WIRED TO JCT. BOX
- BLOWER:** 10 X 10 FORWARD CURVED BLOWER
 3/4 HP DIRECT DR, 2 & 3 HP BELT DR.
- FILTERS:** 4" PLEATED PREFILTERS, 22.3 SF EA.
 95% BAG FILTER, 80 SF EACH
 65% BAG FILTER, 80 SF EA (OPT.)
- OPTIONS:** EYEBOLTS (INSTALLED)
 SILENCER
 MAGNETIC PRESSURE GAUGE
 FILTER SAVER - 2" POLY PADS
- WEIGHT:** 298 LBS. - T3000X2
 332 LBS. - T3500X2
 339 LBS. - T4500X2
- NOISE:** 3/4 HP - 63.4 dBA
 2 HP - 72.0 dBA
 3 HP - 72.0 dBA

DISTRIBUTED BY:

COPYRIGHT: This document and the information contained may not be reproduced or distributed without express written consent of INDUSTRIAL MAID. Unauthorized reproduction, disclosure, or manufacturing use are prohibited by copyright law.



INDUSTRIAL MAID
 INDUSTRIAL MAID LLC
 351 S. 12TH RD.
 CORTLAND, NE 68331
 Ph. (402) 798-7116
 Fax (402) 798-7117
 www.industrial-maid.com