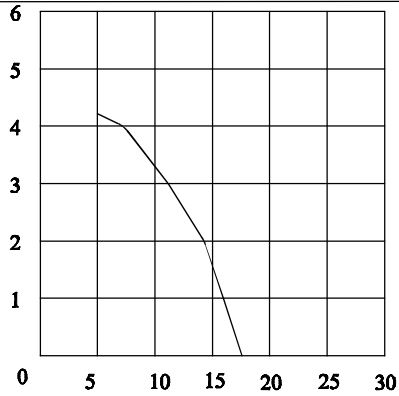
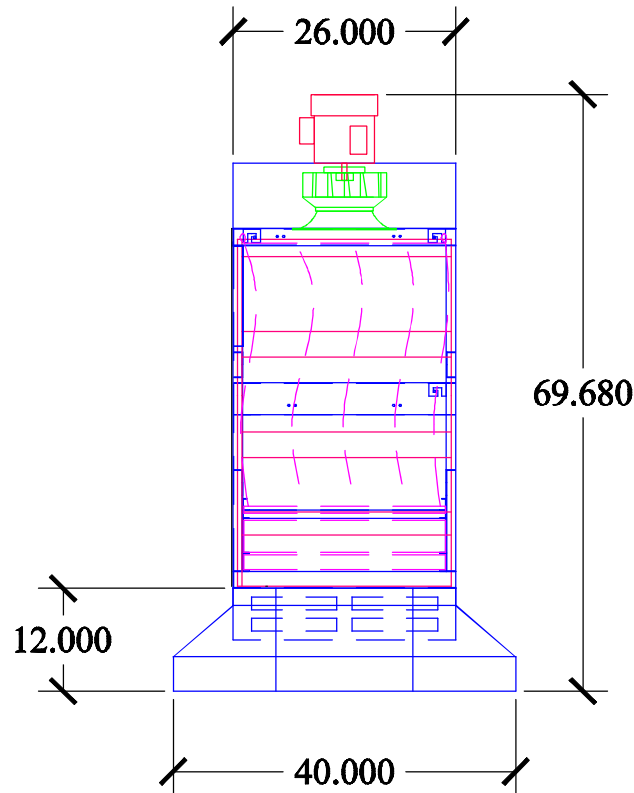
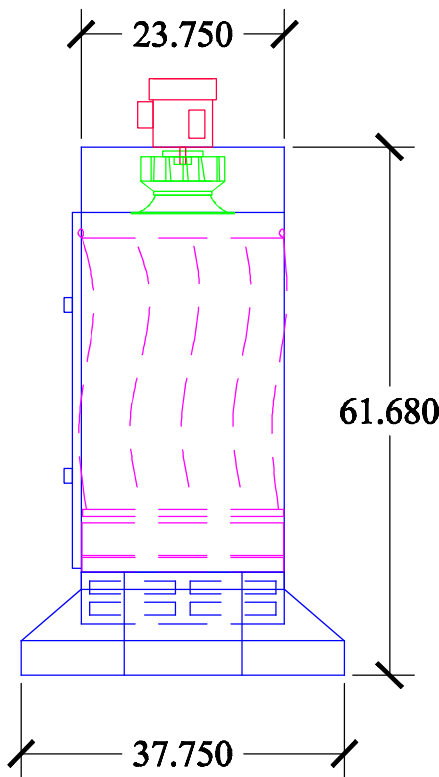
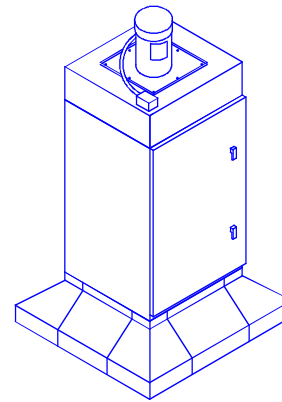


PRESSURE IN. W.G.



CFM X's 100



SHEET TITLE : **AZTech RH36V-1**
 DRWG. NO.: **RH36V134-120808** DRAWN BY: **TAA**
 DATE: **12/08/08** SCALE: **NTS**

SPECIFICATIONS:

- DIMENSIONS:** 70"H X 40" W X 38" D
- MOTOR:** 3/4 HP 115/1/60 TEFC, 10.6 FLA
- CFM:** 1,600 CFM @ 1" W.G.
- ELECTRICAL:** WIRED TO JUNCTION BOX
- BLOWER:** DIRECT DRIVE BI WHEEL
- CONSTRUCTION:** 12 & 14 GA POWDER COATED STEEL FRAME, 16 GA STEEL DOOR, 3/16 POLYETHYLENE PANELS, FULL CARBON STEEL CONSTRUCTION AVAILABLE, 11 & 18 GA HOOD CAM DOOR AND FILTER LATCHES
- STD. FILTERS:** (1) 2" BAFFLES
(1) 4" PLEATS
(1) 95% MAIN BAG, 108 SF EACH
- OPTIONAL FILTERS:** 2" MIST ELIMINATOR
26 LB CARBON AFTERFILTER
2" POLY PREFILTER
4" PLEATED PREFILTER
2" ALUMINUM MESH PREFILTER
99.97% HEPA AFTERFILTER
- OPTIONS:** EYEBOLTS (INSTALLED)
ACOUSTIC LINING
MAGNAHELIC PRESSURE GAUGE
MANOMETER
FLOOR STAND
CUSTOM HOOD SIZES
FIRERASER® FIRE SUPPRESSION
THERMAL SENSOR/ POWER CUT OFF
- WEIGHT:** 534 LBS.
- NOISE:** 83.0 dBA

DISTRIBUTED BY:

COPYRIGHT: This document and the information contained may not be reproduced or distributed without express written consent of INDUSTRIAL MAID. Unauthorized reproduction, disclosure, or manufacturing use are prohibited by copyright law.



INDUSTRIAL MAID
 MFG. BY:
INDUSTRIAL MAID LLC
 351 S. 12TH RD.
 CORTLAND, NE 68331
 Ph. (402) 798-7116
 Fax (402) 798-7117
 www.industrial-maid.com